



FIRE CONTROL PANELS – CONVENTIONAL ORYX200 WEATHERPROOF RANGE



ORYX202-W
2 ZONE WEATHERPROOF
FIRE CONTROL PANEL

DESCRIPTION

The Technoswitch **ORYX** Weatherproof Conventional Fire Control Panel range is ideally suited to industrial/outdoor applications requiring a reliable and robust fire detection solution.

The panels are housed in an attractive, modern powder coated metal weatherproof enclosure for durability and have been designed for ease of installation. A DIN rail wiring strip is available as an option.

The Repeater Panel will mimic all the master fire panel alarm indications. Up to 7 (seven) Repeater Panels can be wired in series onto the Communication Bus.

The integral switch mode Power Supply has a wide AC voltage input range of 100 V AC to 240 V AC, making it ideal for scenarios with widely fluctuating mains supply. The battery charging capabilities of the Power Supply allow for the connection of 7 Ah batteries.

Either 2, 4 or 8 fire zones are provided, each being able to support up to 32 devices. Standard outputs are General Fire and Fault Relays, individual Fire Relays per zone and two fully monitored Sounder Circuits. Two dedicated monitored inputs, one for Remote Reset and one for Remote Silence, are also provided.

Comprehensive test and fault finding features simplify maintenance, these include a one man walk-test, a first-in-first-out 900 event log, and on-board status LEDs for pin-point fault identification.

FEATURES

- 2, 4 and 8 Zone Versions
- Fully compliant with EN54-2 and EN54-4
- 3 Year Warranty
- 100 - 240 V AC Switch Mode PSU
- USB Port for Event Log Download
- 900 Event Log
- Dedicated Fire Relay per Zone
- 2 Monitored Inputs for Remote Reset & Silence
- 2 Monitored Sounder Circuits
- Walk-test
- Service / Commissioning Switch
- Key Switch for User Level Access Control
- Repeater Panel Range Available
- Standard Housing Versions available



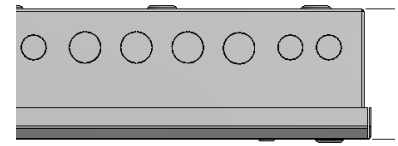


FIRE CONTROL PANELS – CONVENTIONAL

ORYX 200 WEATHERPROOF RANGE

SPECIFICATIONS

Enclosure	Mild Steel IP30, Matt Light Grey (ANP 37035)
Environmental	-5 to 40 °C
Humidity	95% RH, Non-condensing
Weight	
2 & 4 Zone	± 6.5 kg (excl Batteries)
8 Zone	± 9.0 kg (excl Batteries)
Cable Entries	
2 & 4 Zone	Bottom: 5x 20 mm, 2x 25 mm
8 Zone	Bottom: 4x 25 mm, 5x 20 mm
Key Switch	Enable controls
Event Log	900 Logged events
Mains Supply	100 - 240 V AC (+/- 10%), 50/60 Hz, 1.0 A max
Power Supply	27.5 V DC, Switch Mode, 1.2 A load, 0.5 A max battery charging
AUX Supply Output	24 V DC, 0.5 A
Battery Capacity	
2 & 4 Zone	24 V DC, 7 Ah
8 Zone	24 V DC, 7 Ah, 12 Ah or 17 Ah
Battery Charging Current	0.5 A max temperature compensated
Number of Fire Zones	2, 4 or 8
Zone EOL	3k3 Ω
Zone Alarm Threshold	400 - 800 Ω
Sounder Outputs	2 Rated at 300 mA each
Sounder EOL	3k3 Ω
General Fire Relay	30 V AC/DC, 1 A maximum
General Fault Relay	30 V AC/DC, 1 A maximum
Zone Relays	30 V AC/DC, 1 A maximum
Inputs	2 Fully monitored
Monitored Inputs	
EOL	3k3 Ω
Alarm Threshold	Nominal 680 Ω



322,00

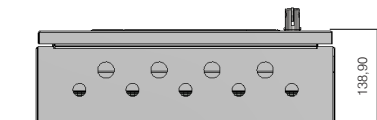


**ORYX202-W & ORYX204-W
WEATHERPROOF HOUSING**



510,00
450,00

500,00



138,90

**ORYX208-W
WEATHERPROOF HOUSING**

ORDERING INFORMATION

Product Code	Product Description
ORYX202-W	2 Zone Conventional Weatherproof Fire Control Panel
ORYX204-W	4 Zone Conventional Weatherproof Fire Control Panel
ORYX208-W	8 Zone Conventional Weatherproof Fire Control Panel
ORYX202-WDIN	2 Zone Conventional Weatherproof Fire Control Panel c/w DIN Rail
ORYX204-WDIN	4 Zone Conventional Weatherproof Fire Control Panel c/w DIN Rail
ORYX208-WDIN	8 Zone Conventional Weatherproof Fire Control Panel c/w DIN Rail

ORYX20x x Zone Conventional Fire Control Panel
 ORYX20x-R x Zone Conventional Repeater Panel

x = Available in 2, 4 and 8 Zone versions

• **DISCLAIMER:** Although the contents of our product literature have been prepared with the greatest care, Technoswitch can accept no liability whatsoever for any direct or indirect damages of any kind that may arise due to either errors or omissions in them, or amendments to products or other specifications following publication. © Technoswitch (Pty) Ltd



HEAD OFFICE — JOHANNESBURG
 Cussonia Park, 3 Ridge Road, Laser Park, Johannesburg T +27 (0)11 794 9144 E info@technoswitch.co.za
CAPE TOWN T +27 (0)21 948 4575 ■ DURBAN T +27 (0)31 266 8843

www.technoswitch.co.za

Document: DS ORYX200 Weatherproof Range 200131 E & OE